

ENVIRONMENTAL EDUCATION CLASSES

2011-2012



SCHLITZ
Audubon
NATURE
CENTER

GRADES 9 THROUGH 12



Meets Wisconsin Model Academic Standards for Education

What Others Are Saying

"This is one of my favorite days of the school year and the children remember this day for years to come. Older students still comment on it."

Carrollton School

"This has been the most wonderful experience. I have been on many field trips...this ranks number one."

Kenosha Christian Life

"The program matched wonderfully to our curriculum. The things we talked about inside and the experiences outside helped to reinforce all that we have been learning at school. It was great that the students could participate - with all the hands-on materials and activities they learned so much! They all want to return with their parents."

Fair Park Elementary

"This is the best field trip experience we have had and would love to repeat it."

Bruce Guadalupe Community School

"Year after year, your organization consistently provides top-notch programs for an affordable price. You are the best in the area, hands-down."

Lake Bluff School

"I feel that your program has enhanced classroom science activities and given the kids the "real-world" connection."

Cumberland School

"Your curriculum connected to the winter season and the live owl was amazing to see...your program gave students opportunities they may not have had otherwise. We had a fantastic time!"

Next Door Foundation

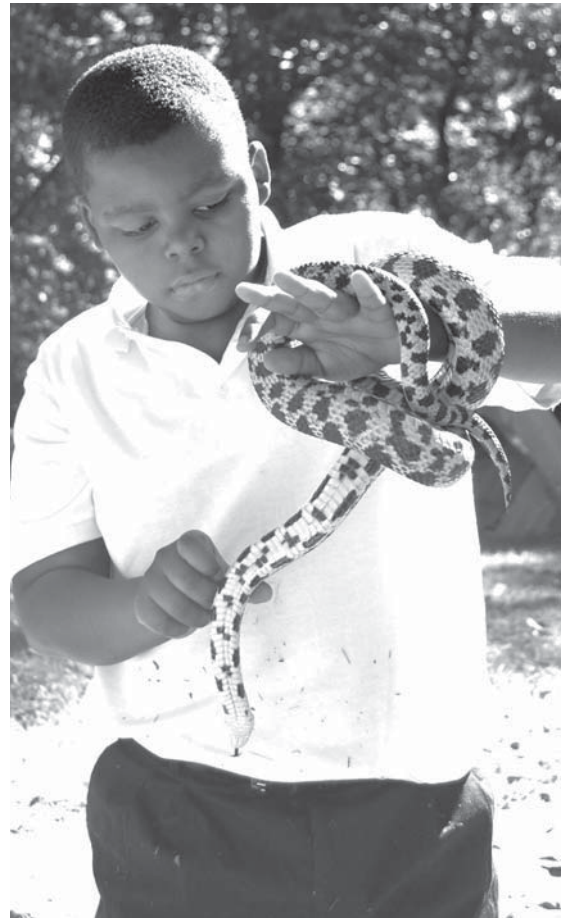


Table of Contents

CLASSES ARRANGED BY GRADE & LOCATION

CLASSES AT SCHLITZ AUDUBON NATURE CENTER	PAGE
A Green Future	1
Aquatic Comparison	1
Canoe Orientation	1
Ecology	1
Environmental Math	1
The Science of Geocaching	1
Lake Michigan	2
Pond Life	2
Reptiles & Amphibians	2
Stalking the Wild Deer	2
Raptors: Predators in the Sky	2
Tracking by Snowshoe	2
CLASSES AT YOUR SCHOOL	PAGE
Astronomy	3
Birds in Art, Literature & Photography - NEW!	3
Eagle and Friends	3
Owls: Designed for Darkness	3
Raptors: The True Sky Hunters	3
CLASSES AT A NEARBY OUTDOOR AREA	PAGE
Natural Areas at Your School	4
Pond Life	4
Tracking by Snowshoe	4
CLASSES AT WISCONSIN NATURAL AREAS	PAGE
Amphibians of Wisconsin	4
Canoe Orientation	4
Cedarburg Bog & Forest	4
Devil's Lake State Park	4
Ecology Along the Ice Age Trail	5
Geocache in Your Neighborhood - NEW!	5
Glacial Geology of N. Kettle Moraine	5
Horicon Marsh & Mounds Tour	5
Kettle Moraine Snowshoe	5
Milwaukee River Canoe	6
Milwaukee River Exploration	6
Sand Dunes of Kohler Andrae	6
Wetlands by Canoe	6



Classes at Schlitz Audubon Nature Center

A GREEN FUTURE

Grades: 9–12
Length: 2.5 hours
Fee: \$5.00 per student
Limit: 50 students

The mission of the Schlitz Audubon Nature Center is to connect people with nature and inspire them to become responsible stewards of the natural world. In this program, we highlight our environmentally green, Gold LEED (Leadership in Energy and Environmental Design) award-winning building as a model of sustainability. Students will take part in a mix of interactive activities based on sustainability with a tour of our building. Some of the highlights include the photovoltaic energy system, the geothermal heating/cooling system, and support logs donated by Aldo Leopold's family. Students will learn how green technology/living lessens our dependence on fossil fuels and will learn about alternative energy choices. Key concepts: sustainability, conservation, and energy.

WHEN: September 2011–June 2012

AQUATIC COMPARISON (ALL-DAY CLASS)

Grades: 9–12
Length: 4.5 hours (Bring a bag lunch.)
Fee: \$8.00 per student
Limit: 25 students

Students will investigate near-shore life in 2 of 3 choices: Lake Michigan, a pond or a river, and make comparisons and inferences from the results obtained. Key Concepts: adaptation, biodiversity, water and nutrient cycles, interconnectedness and food pyramids.

WHEN: August–October 2011 and April–June 2012

CANOE ORIENTATION

Grades: 9–12
Length: 2 hours
Fee: \$55.00 plus price of canoe trip
(See canoe trips on page 6.)
Limit: 50 students

Offered in conjunction with the "Wetlands by Canoe" and "Milwaukee River Canoe" programs, this orientation allows students to develop their canoe paddling skills and significantly extends the educational opportunity of the canoeing programs.

WHEN: August–October 2011 and March–June 2012

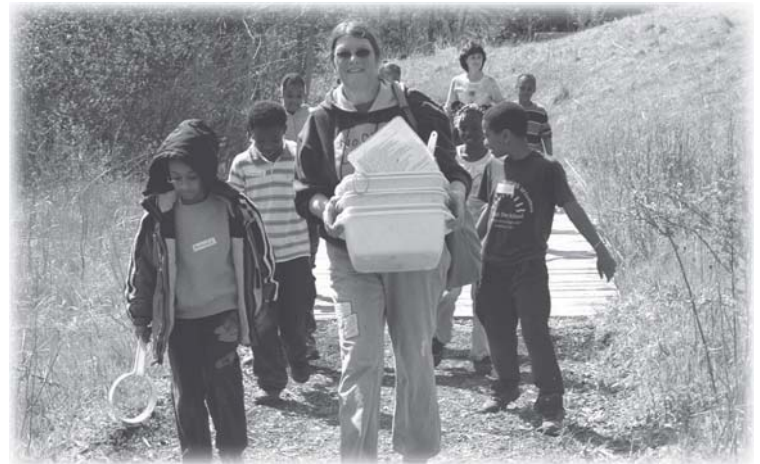


ECOLOGY

Grades: 9–12
Length: 2.5 hours
Fee: \$5.00 per student
Limit: 30 students

Students will learn the basic environmental concepts through participatory activities and concrete experiences, some with live animals. Key Concepts: adaptation, biodiversity, change, community, cycles, energy flow, habitats, sustainability and interconnectedness.

WHEN: August 2011–June 2012



ENVIRONMENTAL MATH

Grades: 9–12
Length: 2.5 hours
Fee: \$5.00 per student
Limit: 30 students

Designed for math classes, this program will challenge students to solve environmental problems using math skills. Depending on the level of the students, skills used can include algebra, geometry and calculus in an outdoor setting. Key Concepts: forestry, math, adaptations, and ecology.

WHEN: August 2011–June 2012

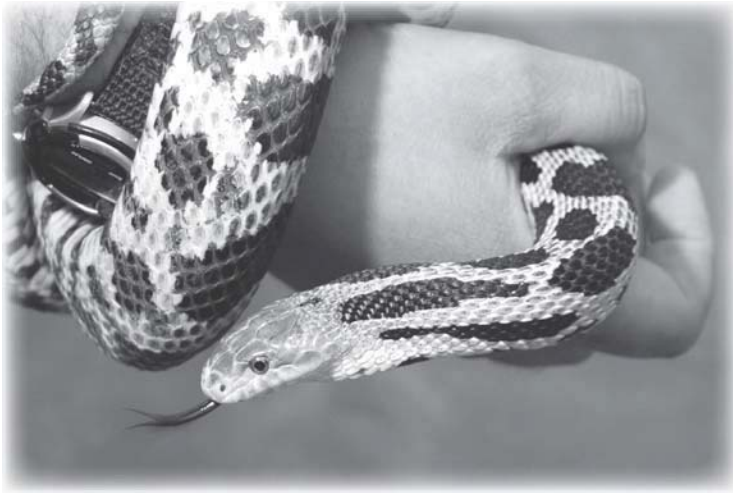
THE SCIENCE OF GEOCACHING

Grades: 9–12
Length: 2.5 hours
Fee: \$5.00 per student
Limit: 25 students

Have you ever thought about combining technology and hiking? It's called Geocaching! Students will use Center supplied GPS units and hike the Center grounds in search of natural landmarks. Students will learn natural history at every stop including: Lake Michigan, ecology, photosynthesis, invasive species, urban deer, and more. Students will get so excited about this high tech treasure hunt that they won't realize they are learning at the same time. Students can be divided into at most 10 groups, so please be aware that 1 adult is needed for every group. Key Concepts: ecology, adaptations, sustainability, habitats, photosynthesis, energy.

WHEN: September 2011–June 2012

Classes at Schlitz Audubon Nature Center



LAKE MICHIGAN

Grades: 9–12
Length: 2.5 hours
Fee: \$5.00 per student
Limit: 30 students

This program will help students appreciate Wisconsin's greatest natural resource. They will beachcomb near shore areas of our great lake to learn about the life that inhabits its hidden depths. Indoor activities and demonstrations will graphically illustrate important issues affecting the lake. Key Concepts: alien species, community, food pyramids, interconnectedness and niches.

WHEN: August–November 2011 and March–June 2012

POND LIFE

Grades: 9–12
Length: 2.5 hours
Fee: \$5.00 per student
Limit: 30 students

Students will investigate the ponds of the Center to discover the myriad life forms that lie hidden inside their depths. We will investigate these creatures “hands on and up close” using special projection equipment. Key Concepts: adaptation, cycles, food chains, niches and predator-prey.

WHEN: August–October 2011 and April–June 2012

RAPTORS: PREDATORS IN THE SKY

Grades: 9–12
Length: 4.5 hours All Day (Bring a bag lunch.)
Fee: \$9.00 per student or minimum cost of \$150.00
Limit: 60 students

The class teaches students to identify the anatomical features of all birds and the specific adaptations that allow a raptor to exercise its unique hunting skills. It will utilize outdoor field study including learning from the Center's live raptors, skins and biofacts. Key Concepts: carrying capacity, environmental indicators, food chains, pyramids, foraging techniques and niches.

WHEN: September 2011–May 2012

REPTILES & AMPHIBIANS

Grades: 9–12
Length: 2.5 hours
Fee: \$5.00 per student
Limit: 30 students

Students will get a hands-on look at the snakes, turtles, lizards, frogs and salamanders of Wisconsin. They will learn the many adaptations, both structural and behavioral, that these creatures possess in order to live in our environment. We will also learn what habitats they reside in by venturing to these areas in search of the creatures. Key Concepts: adaptation, cycles, ecological niches, endangered species, food chains, habitats and predator-prey relationships.

WHEN: September–October 2011 and April–June 2012

STALKING THE WILD DEER

Grades: 9–12
Length: 2.5 hours
Fee: \$5.00 per student
Limit: 50 students

By learning skills that enable students to get within yards of a deer, they are taught about natural science, ecological relationships and local issues of urban whitetails. Classes can be involved in the Center's deer management program. Champion deer are best viewed in late fall/early winter. Key Concepts: adaptation, animal needs, carrying capacity, cycles, habitats, interconnectedness, predator-prey relationships and wildlife management.

WHEN: November 2011–February 2012



TRACKING BY SNOWSHOE

Grades: 9–12
Length: 2.5 hours
Fee: \$5.00 per student
Limit: 25 students

Explore the world of winter at the Schlitz Audubon Nature Center. Students will learn about winter survival, snow and ice phenomena and animal ecology by examining the tracks and signs they leave. Program does not depend on snow cover. Key Concepts: adaptation, carrying capacity, niches and predator-prey relationships.

WHEN: December 2011–February 2012

Classes at Your School

ASTRONOMY

Grades: 9–12
Length: 1 hour
Fee: \$200.00
Limit: 75 students

Planets and stars follow regular patterns, and these have formed the basis for modern discoveries. This program will highlight details of planetary motion, gravity, and the electromagnetic spectrum. We'll also discuss current sky events, visible constellations and touch on the history of astronomy.

WHEN: August 2011–June 2012

BIRDS IN ART, LITERATURE & PHOTOGRAPHY - NEW!

Grades: 9–12
Length: 1 hour
Fee: \$210.00 per program
Limit: 40 students

Bring live hawks, owls, falcons, and a vulture to your photography, art, or creative writing classes. These wild birds will inspire art projects, stories, and pictures by nurturing the budding artist, writer, or photographer with live birds of prey. Perched birds can be seen up close and used as live models in your classroom. A Raptor Specialist will help your students make a connection to the natural world and encourage their creative processes to flow. We'll provide wings, feathers, and artifacts that students can touch and examine up close. There will also be a natural history component about each species and information about how each bird came to be at the Center.

WHEN: September–December 2011 and January–May 2012

EAGLE AND FRIENDS

Grades: 9–12
Length: 1 hour
Fee: \$225.00 per program
Limit: 90 students

Wisconsin historically is famous for Old Abe, the 'War Eagle' who led our troops in battle during the Civil War. In the present we are recognized as a stronghold for the Bald Eagle come back in the lower 48 states. Listed as an endangered species for decades and the only fish eagle in North America, Bald Eagles have finally begun to overcome the effects of hazardous chemicals in the environment. Our eagle trainer will discuss the habits of this apex predator and compare it with his hawk, falcon, and owl friends that come along. This is a very special opportunity to get a beak-to-beak view of our national symbol!

WHEN: September 2011–May 2012



OWLS: DESIGNED FOR DARKNESS

Grades: 9–12
Length: 1 hour (Add 30 minutes for pellet dissection.)
Fee: \$210.00 per program
Limit: 90 students

These seldom seen, silent winged hunters shine best when the sun goes down. A member of our feathered raptor staff will model their special night hunting adaptations and some basic owl behaviors providing insights into owls' natural history. Using artifacts for comparison, discover with your students how owls have capitalized on these special tools to outwit their prey and survive for over 55 million years on our planet. (Pellets can be purchased at a cost of \$3 per pellet with an additional \$60 fee for an optional 30-minute pellet dissection led by a SANC naturalist.)

WHEN: September 2011–May 2012

RAPTORS: THE TRUE SKY HUNTERS

Grades: 9–12
Length: 1 hour
Fee: \$210.00 per program
Limit: 90 students

This unique program will captivate and focus students by utilizing live birds-of-prey to teach important environmental concepts. Students will be immersed in the ecology of a variety of different raptors, a mix of both diurnal and nocturnal species that inhabit the urban Milwaukee area. Students will experience a personal visit from each raptor with a hands-on examination of raptor artifacts, study mounts and prey specimens. Key Concepts: adaptations, carrying capacity, conservation and protection, environmental indicator species, food chains and pyramids, niches and predator-prey relationships.

WHEN: September 2011–May 2012

Classes at a Nearby Outdoor Area

Classes at Wisconsin Natural Areas

NATURAL AREAS AT YOUR SCHOOL

Grades: 9–12
Length: 2 hours
Fee: \$200.00 for 2 hours
Limit: 25–50 students

Many schools have undertaken the exciting challenge of promoting their own natural areas at school. Our staff can assist you with the many facets of interpreting these sites: guided activities, program development, site consultation and staff training. The possibilities are limitless, let your imagination run wild!

WHEN: August 2011–June 2012

POND LIFE

Grades: 9–12
Length: 2.5 hours
Fee: 25 students = \$200.00
50 students = \$400.00
Limit: 50 students

Students will investigate the ponds of a nearby wetland to discover the myriad life forms that lie hidden inside their depths. We will investigate these creatures "hands on" and up close using special projection equipment. Key Concepts: adaptation, cycles, food chains, niches and predator-prey.

WHEN: August–October 2011 and April–June 2012



TRACKING BY SNOWSHOE

Grades: 9–12
Length: 2.5 hours
Fee: \$200.00 per program
Limit: 25 students

Explore the world of winter in the location of your choice. Students will learn about winter survival, snow and ice phenomena and animal ecology by examining the tracks and signs they leave. Program does not depend on snow cover. Key Concepts: adaptation, carrying capacity, niches and predator-prey relationships.

WHEN: December 2011–February 2012

AMPHIBIANS OF WISCONSIN

Grades: 9–12
Length: All day (Bring a bag lunch.)
Fee: \$225.00 per program
Limit: 25 students

We will investigate special breeding ponds in the height of amphibian courtship and egg laying. Searching for, capturing, and watching these fascinating creatures will captivate any student's attention. Key Concepts: adaptation, biodiversity, change, community, cycles, food chains, energy flow and predator-prey.

WHEN: April–June 2012

CANOE ORIENTATION

Grades: 9–12
Length: 2 hours
Fee: \$55.00 plus price of canoe trip
(See canoe trips on page 6.)
Limit: 50 students

Used in conjunction with the "Wetlands by Canoe" and "Milwaukee River Canoe" programs, this particular orientation allows students to develop their canoe paddling skills and, for high school students, significantly extends the educational opportunity of the canoeing programs. Available during school hours or outside of regular school hours when requested.

WHEN: August–October 2011 and March–June 2012

CEDARBURG BOG AND FOREST

Grades: 9–12
Length: All day (Bring a bag lunch.)
Fee: \$225.00 per program
Limit: 30 students

This northern community type will be explored by hiking an extensive boardwalk system. Students will be exposed to a strange and mysterious world where plants eat animals and life forms are preserved for thousands of years. The afternoon is spent exploring a virgin maple forest. Key Concepts: adaptation, biodiversity and community.

WHEN: August–November 2011 and April–June 2012

DEVIL'S LAKE STATE PARK

Grades: 9–12
Length: Extended day (Bring a bag lunch.)
Fee: 25 students = \$250.00
26–50 students = \$500.00
Limit: 50 students

Hike the spectacular bluff trails of one of Wisconsin's most impressive state parks and learn the biology and geology of the region. A nearby visit to the beauty and present-day serenity of Parfrey's Glen will give evidence to the stormy early history of these rock formations. Key Concepts: adaptation, biodiversity, change, community, interconnectedness and niches.

WHEN: October 2011–May 2012

Classes at Wisconsin Natural Areas

ECOLOGY ALONG THE ICE AGE TRAIL

Grades: 9–12
Length: All day (Bring a bag lunch.)
Fee: 25 students = \$225.00
26–50 students = \$450.00
Limit: 50 students

This discovery journey that winds through one of Wisconsin's best natural areas will invariably reveal a continual barrage of exciting animals and plants that can be linked to classroom concepts or requested themes. The beauty and grandeur of the area coupled with the constant anticipation of discovery in these biodiverse communities makes this format always rewarding. Winter months highlight glacial features and animal signs. Key Concepts: habitats, adaptation, biodiversity, and geology.

WHEN: August 2011–June 2012

GEOCACHE IN YOUR NEIGHBORHOOD - NEW!

Grades: 9–12
Length: 2–2.5 hours
Fee: \$150.00 per program
Limit: 25 students

Students will learn how to geocache inside their classroom. After that, we'll hop on your bus and lead the students towards cacheboxes full of treasure! The Audubon Center will supply the GPS units and the students supply the trinkets to swap with whatever they find. Students will enjoy a positive outdoor experience near their neighborhood or school.

WHEN: August–November 2011 and March–June 2012



GLACIAL GEOLOGY OF N. KETTLE MORaine

Grades: 9–12
Length: All day (Bring a bag lunch.)
Fee: 25 students = \$225.00
26–50 students = \$450.00
Limit: 50 students

This natural treasure is world-renowned for its ice age features. We will take a bus tour of the many forms the ice sheet left on the landscape and hike up to and over them. A bag lunch stop at the Ice Age Center will take advantage of various audio-visual resources that help students understand the dynamic genesis of these glacial relics. Features are most visible when the leaves are off the trees. Key Concepts: adaptation, biodiversity, community, change, glaciation and interconnectedness.

WHEN: October 2011–May 2012



HORICON MARSH & MOUNDS TOUR

Grades: 9–12
Length: All day (Bring a bag lunch.)
Fee: 25 students = \$225.00
26–50 students = \$450.00
Limit: 50 students

Experience one of the world's greatest sites for bird watching, as we make various stops around and in the marsh, and at nearby nature centers. This area has also been known as a very important area for Native Americans, as seen in their effigy mounds. The students will realize that they are looking at more than just dirt, as they will be able to visualize panthers and deer. Key Concepts: ecology, history, adaptations, archaeology, niches, habitats, and conservation.

WHEN: September–October 2011 and April–June 2012

KETTLE MORaine SNOWSHOE

Grades: 9–12
Length: All day (Bring a bag lunch.)
Fee: \$225.00 per program
Limit: 25 students

The northern and southern Kettle Moraine forests contain some of the largest and highest quality wildlife habitats in southern Wisconsin. Winter boldly displays the habits and activities of dramatic wildlife. We will break the bondage of formal trails and track these fascinating creatures to their denning sites. An optional orienteering lesson can easily be incorporated into this program. Key Concepts: adaptation, animal needs, bio-diversity, communities, inter-relationships, niches and predator-prey.

WHEN: December 2011–February 2012

Classes at Wisconsin Natural Areas

MILWAUKEE RIVER CANOE

Grades: 9–12
Length: All day (Bring a bag lunch.)
Fee: \$275.00 per program
(Add \$55.00 w/canoe orientation.)
Limit: 25 students

Discover the wild aspect of Milwaukee's river courses. Wildlife is abundant in many stretches and is frequently encountered. Their adaptations and niches in the river community will be explored. It should be understood, however, that this program is significantly different and is a great complement to the Wetlands Canoe program. This program explores a suburban river's relationship to the surrounding community. The class will be conducted just north of Thiensville unless requested otherwise. Key Concepts: adaptation, biodiversity, food chains, habitat loss and pollution.

WHEN: August–October 2011 and March–June 2012



MILWAUKEE RIVER EXPLORATION

Grades: 9–12
Length: 2.5 hours
Fee: \$225.00 per program
Limit: 25 students

This exploratory hike into the Center's 40-acre Milwaukee River property on Brown Deer Road will reveal the identity and uncover the activities of the many animals that utilize these last remaining natural areas of the county. By wading in the shallow riffle areas adjacent to the forest and using various nets and seines to capture water creatures, students will calculate the biotic index and confirm the relatively high quality of the river at this location. Key Concepts: adaptation, community, food chains, habitat, niches, photosynthesis and water cycles.

WHEN: September–October 2011 and April–June 2012

SAND DUNES OF KOHLER ANDRAE

Grades: 9–12
Length: All day (Bring a bag lunch.)
Fee: 25 students = \$225.00
26–50 students = \$450.00
Limit: 50 students

Students do not have to travel far to learn dune ecology. We will hike the "cordwalk" and learn about the adaptations that resident plants and animals have in order to live in this habitat that is unique to Wisconsin. Key Concepts: adaptation, community and niches.

WHEN: August–October 2011 and March–June 2012

WETLANDS BY CANOE

Grades: 9–12
Length: All day (Bring a bag lunch.)
Fee: 25 students = \$275.00
(Add \$55.00 w/canoe orientation.)
Limit: 25 students

Using the Center's canoes, students will get intimate looks at the fascinating creatures of a wild marsh. Important wetland concepts are developed in discussions about student discoveries. The program requires the school to arrange bus transportation to a site within an hour of the school. Key Concepts: adaptation, biodiversity, community, food chains, interconnectedness and niches. An optional pre-trip program on wetlands at your school will extend the student's overall experience and understanding. Popular sites are Mukwonago River wetlands, Rome Pond Wildlife area, and Lulu Lake natural area.

WHEN: August–October 2011 and March–June 2012

Registration Form

PLEASE PRINT. BLACK INK ONLY.

School Name: _____ Grade: _____

School Start Time: _____ Dismissal Time: _____

School Address: _____

City: _____ State: _____ Zip Code: _____

Teacher Name: _____ Home Phone Number: _____

E-Mail Address: _____

School Phone Number: _____ Ext : _____ Fax: _____

Earliest possible trip date (fall): _____ Latest possible trip date (spring): _____

Preferred Request(s):

Class	#Dates Needed	Month(s) Requested	# Students	Grade	Preferred Start Time
_____	_____	_____	_____	_____	_____
_____	_____	_____	_____	_____	_____
_____	_____	_____	_____	_____	_____
_____	_____	_____	_____	_____	_____
_____	_____	_____	_____	_____	_____
_____	_____	_____	_____	_____	_____

Please mail or fax registration form to:

**Schlitz Audubon Nature Center
Attn: Registrar
1111 E. Brown Deer Road
Milwaukee, WI 53217**

Fax: 414-352-6091

Application Date: _____

Please Note: Specific dates may be requested, however, we cannot guarantee those dates.

Registration Instructions

Welcome to another exciting year of learning and fun at Schlitz Audubon Nature Center! Please follow these instructions when completing the registration form on the previous page.

- 1) Program requests are filled on a first-come, first served basis.
- 2) PLEASE PRINT all information on the enclosed registration form, located on the previous page. Register one class per form and make copies if necessary. Mail the form(s) to the Center, Attn: Registrar, at 1111 E. Brown Deer Road, Milwaukee, WI 53217.
- 3) OR go to the Schlitz Audubon Nature Center Website at www.sanc.org and register online. Click on "School Programs" in the menu section on the right side of the home page. On the "Environmental Education" page that comes up, click on the "Click Here To Register" (Online Registration Form.) Complete the registration information. Once complete, click "Submit Registration Info" at the bottom of the Registration page to e-mail the form directly to the Center.
- 4) If you are registering for multiple classes and mailing the forms to the Center, please make copies of the enclosed registration form on the preceding page and REGISTER ONE CLASS PER FORM. If you are registering for multiple classes on our website (www.sanc.org), please complete one form per class and send each e-mail form separately.
- 5) Two or more teachers coming at the same time to the Center for the same SANC class with their students, should complete ONE registration form with both teachers' names printed on the form. On the Website, two or more teachers coming for the same SANC class on the same day with their students should complete the e-mail form with both teachers' names included on this form.
- 6) If you request a morning class, your students must arrive at the Center between 9:00am - 9:30am. Afternoon classes begin between 11:30am and 12:00pm noon to allow buses to be able to leave by 2 pm. If your class is able to stay until 2:30pm, please indicate this on your registration form.
- 7) A confirmation will be sent to all those registered for classes. Please sign one copy and return it to guarantee your field trip to Schlitz Audubon Nature Center.

CANCELLATION POLICY:

A fee will be charged for all cancelled programs:

\$25 for classes cancelled with more than four weeks' notice,

\$40 for classes cancelled with less than four weeks' notice.

CONTINUED LOW PRICES!

Schlitz Audubon Nature Center will continue to offer the high-quality natural science classes you and your students have come to expect from us.

VET-CERTIFIED CRITTERS!

As in the past, all of our animals used in programs are vet certified and carry health certificates. Schools can be reassured the Center is providing safe, hands-on classes.

SCHOLARSHIP FUNDS!

Through the generous contributions of many area corporations and foundations, the Center is able to continue to offer funds to students from low-income families. Please contact the Registrar for information on scholarships.

Experience the Magic of Nature

MISSION STATEMENT

"Schlitz Audubon Nature Center connects people with nature and inspires them to become responsible stewards of the natural world."



**SCHLITZ AUDUBON NATURE CENTER
1111 E. BROWN DEER ROAD
MILWAUKEE, WI 53217
(414) 352-2880
WWW.SANC.ORG**