

Great Hall



The Great Hall is a beautiful location for an evening event. The room has a two-story beamed ceiling, windows overlooking the prairie and two wood-burning fireplaces. The Great Hall space also includes the Cupola, Hearth Room and outdoor Veranda. These rooms are only available after 5:30 pm

Capacities:

250 standing reception

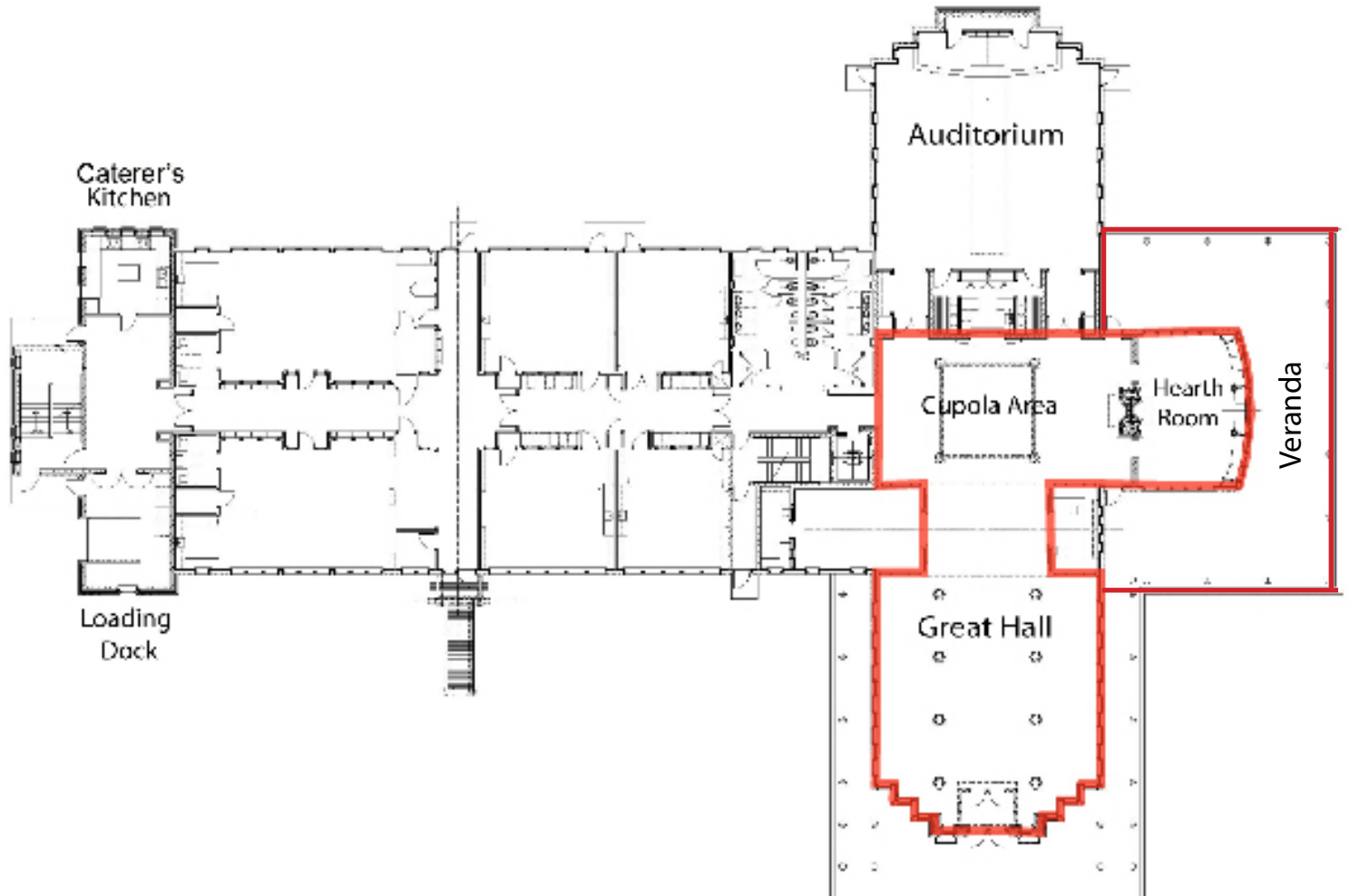
225 dinner seating, tables and chairs

See Reverse Side for Floor Plans



SCHLITZ
Audubon
NATURE
CENTER

Great Hall



Great Hall rental space outlined in red