

# Center Focus

[www.sanc.org](http://www.sanc.org) 1111 East Brown Deer Road Milwaukee, WI 53217 414.352.2880



SCHLITZ  
Audubon  
NATURE  
CENTER

Geo Coordinates: N 43° 10.498 W 087° 53.110

## Jan/Feb 2011

### SANC's First Ever Winter Carnival

Sunday, January 16  
See back page for details



### 2011 Wisconsin Junior Duck Stamp Exhibit

On display Jan. 15 - Feb. 27

### Family Camp-In

Friday, January 28  
See page 10 for details



### Celtic Harp Concert Fundraiser

Sunday, February 20  
See back page for details

### Schlitz Audubon Nature Center

1111 E. Brown Deer Road  
Milwaukee, WI 53217  
414-352-2880  
[www.sanc.org](http://www.sanc.org)

#### Open 7 Days a Week

9:00am - 5:00pm  
\$6 Adults, \$4 Children  
Free Admission to Members

**Closed Thanksgiving,  
Christmas and New Years Day**

## Little Green Invaders

By Elizabeth Cheek, Executive Director



Straight out of a science fiction story, little green invaders are coming, and they're leaving destruction in their wake. Emerald ash borers, invasive insects from Asia, have arrived in our state, and they are absolutely lethal to ash trees. The borer is metallic green in color and small enough to fit on the top of a penny; but though small in size, the emerald ash borer has already killed tens of millions of ash trees across the eastern states. In the next ten years, experts estimate that the borer will kill most ash trees in the United States.

Currently, infestations of the borer have been identified in both Ozaukee and Milwaukee counties. Within the next year or within a few years, we expect to see increased woodpecker activity at the Center, a hallmark of infestation. We know that soon thereafter, it will wipe out most of our ash trees and threaten the loss of our four species of ash: black, blue, green, and white. The Center will look like a very different place - as will your own yard and your street and your community. The destruction will be great.

We've been dealing for years with plant invaders like buckthorn and garlic mustard. We have made progress little by little over time. This invader is different: when its presence becomes apparent, it's already too late. So, by necessity, we're being very proactive.

This past summer, we began a treatment program to preserve selected ash seed trees as part of our long term forest recovery planning. We've also started to plant an understory of other species of trees in areas where we stand to lose 100% of the ash tree canopy. This will ensure that these new plants will be started and established when the ashes die. We're cutting down some ash to protect other valuable species that could be damaged by decaying trees. And in some areas that we know will become cleared, we're planting prairies to connect existing prairies and create a larger habitat for grassland birds.



We have already conducted an ash borer conference on managing high conservation value forests. With our research and expertise, we will continue to provide leadership to help individuals and organizations make sound decisions regarding ash borer management and the future of our forests.

Matt Smith, our Land Steward, has written more about the emerald ash borer on page 4.

## BOARD OF DIRECTORS

### Officers

David K. Hoover  
President

John S. McGregor  
Past President

Leo D. Freeman  
Treasurer

Peter T. Uihlein  
Secretary

Jane B. Bell  
VP-Development

### Board

Suzy Boerke  
Robert C. Bourgeois  
Nick F. Checota  
Buddy Doll  
Roman A. Draba  
Timothy J. Gerend  
John W. Grunau  
Margarete R. Harvey  
Meg Kinney  
Alok Maskara  
Diane K. O'Connor  
Nick Pabst  
Khadijah S. Perry  
Cynthia Palmersheim  
Jane Segerdah

### Past Presidents

John H. Kopmeier, Jr.  
Philip R. Smith  
Dennis L. Fisher  
Terrence K. Knudsen  
Thomas J. McCutcheon  
Thomas B. Fitzgerald  
Randolph H. Dean  
Stephen F. Geimer  
Thomas J. Drought

### Director Active Emeritus

Dorothy K. Vallier

### Honorary Directors

Polly H. Van Dyke  
Edwin P. Wiley

### Executive Director

Elizabeth B. Cheek

*Center Focus* is produced by  
Schlitz Audubon Nature Center

Issue No. 1 - 2011

## Development Updates

By Debby Fulton, Director of Development

### An Investment That Will Never Lose It's Value

With fewer opportunities to explore the outdoors, more people of all ages are losing their connection with the natural world. As many of you know, SANC offers a remedy for "nature disconnection" by providing a 185- acre "urban wilderness," where adults and children experience the wonders of nature every day.

*Nature is the one place where miracles not only happen, but happen all the time."*

*Thomas Wolfe*

For 39 years, donors, members, volunteers, and staff have been investing in SANC, which has allowed us to connect people of all ages with nature. We have every intention of continuing our mission but cannot do it without your help. To those of you who have made your gift to the Annual Fund Campaign already, a big heartfelt THANK YOU! We really appreciate your support. For those of you who have not, please consider investing today. Help us to continue to experience the many miracles nature has to offer!



## Green Living Tips

### Audubon's No-Salt Diet

By Moya Mowbray, Environmental Educator

For the past several years, our nature center has been salt-free. Wanting to improve the health of the soil, plants, and water that we promise to protect in our Center's mission, we decided to leave road salt behind. Googling "Environmental Impacts of Road Salt" resulted in 258,000 findings. That's a whole lot of documentation!

In our clay-intense soil, road salt tends to reduce the exchange capacity of soil, diminishing nutrients that are important to soil productivity. Salt is hard on plants, too. The salt stored in the soil stresses the ability of roots to absorb water, and salt spray can cause direct toxicity to plants. High salt concentrations harm aquatic life by impeding water circulation and, consequently, oxygen transportation. The electrolyte balance of fish is disrupted by elevated salt concentrations, weakening their immune systems and hindering reproduction.



As far as the environment, eliminating road salt is a no brainer, but what about the usefulness of clear roads and slip-free surfaces for our human visitors? We obviously need to balance both concerns. At SANC we decided to (gulp) increase our de-icing budget, and purchase no-salt de-icers. We also try to apply de-icers sparingly, and plow and shovel more frequently. What can you do? Consider using salt substitutes outside your homes, and when visiting our Center, slow down, drive carefully, and enjoy the winter world within our natural sanctuary.



# News From the Raptors...

By Diane Visty, Raptor Manager

## Highlights from Xtreme Raptor Day



Photos by Bob Bailie

### Bird Spotlight

By Ellen Schneiderman, Raptor Educator

Oracle. Big name, tiny owl. But don't let his size fool you! Oracle, our Northern Saw Whet owl, is three ounces of determined, fierce predator. His huge, yellow eyes are fitted with phenomenally feathered eyelids, earning him the nickname: Blinkers. Oracle caused quite a stir when he was found injured in Arkansas two years ago. No Saw Whet had been seen there in over 25 years! A Wisconsin native, and happily in our care at SANC, Oracle continues to cause a stir with his ferocious personality and killer good looks! Feed Oracle for a month and be his special sponsor for only \$30.00.

**ORACLE**  
*Northern Saw Whet Owl*



For more information about sponsoring our Raptors, please visit the 'Raptors' section on our Website, [www.sanc.org](http://www.sanc.org), or call us at 414-352-2880 for sponsorship information.

# On the Ground

By Matt Smith, Land Manager

## Emerald Ash Borer Management in Our Lake Forest

With the onslaught of the emerald ash borer (EAB) we do not stand to just lose a whole army of pioneering trees; we will lose more than 10% of our total tree species biodiversity, and see the extinction of our four native ash species: green, white, black, blue. Green ash is the most abundant ash species on the Schlitz landscape, most common in disturbed areas and on a variety of soils varying in moisture. White ash is more associated with dryer upland sites and can be found on our slopes leading to the lake. Black ash is generally restricted to wetter soils and is a primary provider of shade in our ephemeral ponds which host a diverse population of amphibians. Native blue ash is currently a Wisconsin threatened species and is only present in four locations at Schlitz due to memorial plantings. All ash species play an integral role in the environments they inhabit, be it a food source, air filtration, soil/water retention, habitat for animals, fungi and bacteria.



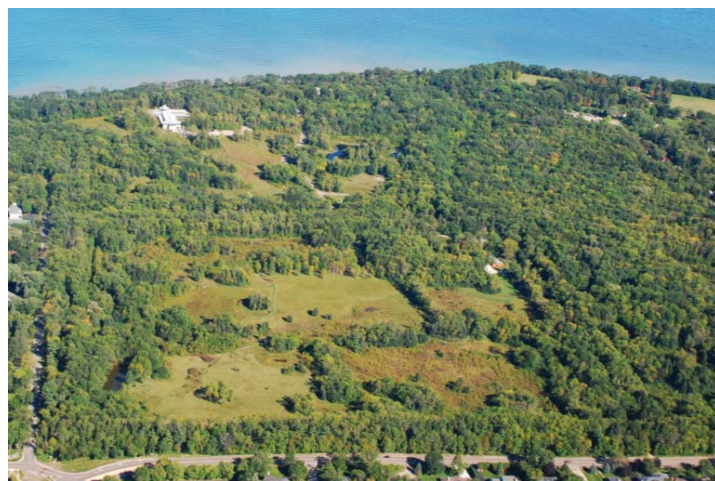
*Emerald ash borer damage to Ash tree. Photo courtesy of Purdue University Department of Entomology.*

Depending upon the location at Schlitz Audubon Nature Center, we will lose between 25% -100% of our forest canopy cover. Ash trees have played a huge role in our forest's recovery. The loss of these trees is going to be shocking to all of us. Most of the sense of reforestation progress on our property is due to the density and growth of ash. A relatively sudden loss of these trees will come as a strong setback because of the lack of native ecological equivalents. This will force us to consider planting trees

like we have never planted before, and to be particularly vigilant regarding the release of invasive species. While this struggle seems daunting, it is good we are getting an early start in implementing forest recovery practices.

Early infestations of EAB are extremely hard to detect and could be taking up residence anywhere in the state. Right now we are working to manage for this unprecedented transition. Cutting ash trees now can help to slow the spread of emerald ash borer as it explodes. While selecting ash trees to remove, we must carefully protect non-ash trees, remove hazardous trees, and plant replacement trees to reclaim the lost ground.

For more information regarding the management of ash trees and the biology of the emerald ash borer, visit the UW-Extension or DNR Websites, [www.entomology.wisc.edu](http://www.entomology.wisc.edu) or [www.dnr.wi.gov](http://www.dnr.wi.gov) or call SANC at (414)352-2880 ext. 244.

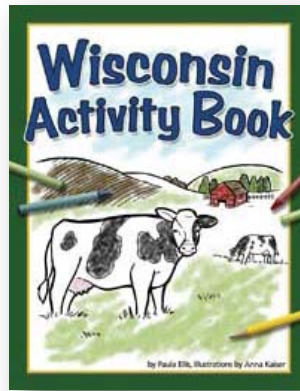
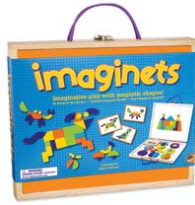


*Schlitz Audubon Nature Center before and after the forest pioneering effects of Ash and Dogwood in our disturbed fields.*

# NATURE STORE NECESSITIES

## Imaginets by Mindware

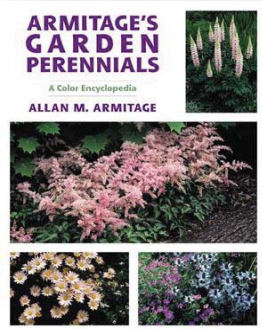
Looking for a gift that will stimulate visual thinking skills and entertain your child? Imagination + Magnets = Imaginets! Brightly colored magnet blocks can be arranged to replicate animals, people, and interesting nature scenes. The set also comes with a sturdy wood carrying case and the magnetic surface doubles as a dry-erase board, so kids can decorate a backdrop for their creations!



## Wisconsin Activity Book

This is a great way to enjoy the wonderful state of Wisconsin with your family. Give your kids this fun activity guide for hours of fun. From mazes and word finds to maps and coloring pages, this is an incredible resource for teaching your kids about the state. It's also an ideal activity for car rides and quiet time.

## Armitage's Garden Perennials



This colorful encyclopedia is the most comprehensive single-volume photographic resource on perennial plants. With nearly 1,500 photographs and concise, yet descriptive text, this book highlights some of the most interesting, important, and overlooked perennials.

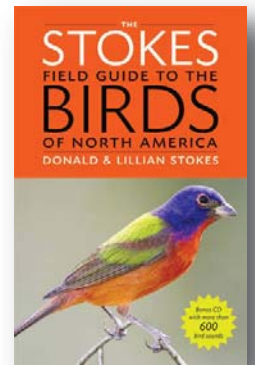
## Pattern Play by Mindware



These Pattern Play blocks are a great way to introduce kids to math concepts like sorting, matching, symmetry, and fractions. With vibrant colors and unusual shapes, this high-quality set includes 40 wood blocks, a 10.5"-square wood building tray, 40 pattern cards and a drawstring canvas storage bag. Check out this great item!

## Stokes Field Guide to the Birds of North America

This is the ultimate field guide for today's birder- the biggest, most colorful, most useful identification guide to birds ever produced. The guide features 853 North American bird species and more than 3,400 stunning color photographs. It's portable enough to fit in your pocket!



## Looking for a place to host your next event?

The Schlitz Audubon Nature Center makes a great location for a business meeting or event. Enjoy a quiet, productive meeting with your staff or plan an evening event or business reception with us and enjoy the privacy of our location after hours.

The Center also offers a unique setting for weddings. Our outdoor scenery and green building will give you a spectacular ambience for your special occasion. If you're planning a wedding, don't miss the Wedding Show and Tell event here at the Center on Sunday, February 13, presented by O2M Productions. To purchase tickets, visit [www.weddingshowandtell.com](http://www.weddingshowandtell.com).

For more information about our rental spaces, please contact Julia Kathan, Rental Coordinator, at 414-352-2880 ext. 141 or at [jkathan@sanc.org](mailto:jkathan@sanc.org).



# Early Childhood News

## Halloween with Lois Ehlert

By Lorna Hilyard, Nature Preschool Teacher

It was a real TREAT to have author and illustrator Lois Ehlert visit with us for our "Stories of Nature" Halloween Hike. As she read her stories, she shared many of her TRICKS of the trade. Did you know that she hides hearts in her books? While reading *Tree Man*, she identified the leaves and told where they came from – Beaver Dam (her hometown), California or "two blocks from the White House". She explained that she often picks up interesting leaves and color copies them before they turn brown.



Schlitz Audubon Nature Center has been a source for her research. When Ehlert wanted to see milkweed growing in the wild for her butterfly book *Waiting for Wings*, she came to our prairie to photograph it.

She has hiked our trails for many years and has even cross-country skied here in the winter. Lois Ehlert wore a sweater with *Oodles of Animals* on it. On a trip to Peru, she was inspired by ancient pictographs to create the variety of stylized animals we find in her books and in the enchanting floor of the Children's Room of the Milwaukee Public Library. As an author who is a friend of all children, she is an inspiration to us all, just as nature has been an inspiration to her!



## Nature Preschool Registration

Preschool registration information for the 2011-2012 school year is available beginning January 3 on our Website [www.sanc.org](http://www.sanc.org) or at the preschool desk (contact Laurie at ext. 154). We will be hosting a preschool open house on January 15 from 9:30-11:30am for interested families. Registration for current and alumni families begins January 24. Priority registration for SANC members starts January 31 and registration for the general public is February 7.



## KID'S QUIPS

**"Audubon's for getting dirty  
and having fun.**

**Having fun and learning,  
that's what the Audubon  
was made for."**

-- Tess, Age 5

## Mark Your Calendars!

Monday, January 10 - First Day of Second Semester

Saturday, January 15 - Open House

Sunday, January 16 - Winter Carnival

Monday, January 17 - No School (Martin Luther King, Jr. Day)

Tuesday/Wednesday, January 18 & 19 - Parent Teacher Conferences (No School)

Monday, January 24 - Priority Registration for Returning Students

Monday, January 31 - Priority Registration for SANC Members

Monday, February 7 - Registration for General Public

Monday, February 21 - No School (President's Day)



# PLANET VOLUNTEER

By Laurie Haig, Volunteer Coordinator

## A Look Back on 2010

With the special events that use volunteers now behind us for 2010, we can not only look back at a very successful 2010 for our Center and volunteers, but also look to the future for the new year. We like to keep track of volunteer hours and use that information when applying for grants. In 2009, we had 19,027 hours of dedicated time logged in by our volunteers. That's an increase of 10% from 2008. And 2010 appeared to be another great year, as well. With an increase of several corporate and school groups, along with additional use of volunteers at events, the booth, and summer camps, we had hundreds of people making an impact on our Center. Although the downfall of the economy left many people with more time on their hands than expected, we were happy to see them looking to us to fill that time.



Volunteers are truly the backbone of our Center, and we thank them every opportunity we can. Some wander in several days a week to be sure we are in good shape, some come once a year for certain events and some like to stick to a scheduled time. But whatever time they can donate to us, we are always appreciative of their dedication to the success of our Center.

One official way of saying thanks is our Annual Volunteer Party, which we held last October. About 125 staff and volunteers celebrated our good works together, and head land manager, Matt Smith, gave everyone an update on what his team has been working on.

During October, our annual Birdseed Sale fundraiser saw increased sales and the volunteers were very thankful for a beautiful fall Saturday to process and load seed into cars.



We tapped into our large database of student volunteers for the evening Halloween Adventure Hike event at the end of October. Many area high school students needed volunteer time for school or clubs and were more than happy to pitch in to guide families along our trails in the twilight hours. They also helped in other areas that evening, and this year, we had more adults join in on the fun.



To wrap up the year, we had a few dozen people help the raptor team during Xtreme Raptor Day in early November. Again, a beautiful day brought people here in droves, and the volunteers handled them with ease.



We know we can offer these events and others throughout the year because we have such great volunteers supporting our Center. We are so thankful that they come and lend a hand for whatever needs we might have.

Looking forward to 2011, we'd love to see you here too! If you're interested in getting involved, the volunteer form with all the activities listed is on our website. The next issue of the *Center Focus* Newsletter will feature our summer camp brochure, and we'll start hunting down summer camp volunteers the minute you receive your newsletters. Be sure to get involved early, as spots for the camps fill up quickly. We will also be looking for one or two volunteer interns to assist us with the camps and other areas, so please spread the word if you know someone who is interested.

*For all your volunteer information, please contact Laurie Haig at [lhaig@sanc.org](mailto:lhaig@sanc.org) or 414-352-2880 ext. 144.*

# New Members

M. Suzanne Abler	Lawrence Hanlon and Jennifer Knapp	Sarah and Ben Ortz
Ezra and Thip Aitch	Dave and Penny Hase	Jill G. Pelisek
S. Baggott	Eric Hausen	Khadijah Perry
Bruce R. Bauer	Susan Heffron	Wendy Pietz and John Borchardt II
Melanie and Chris Berg	John Heilmann	Joel and Margo Plant
Keith and Carol Bergen	Alfred and Sharon Heyer	Nicky and Zane Prewitt
Michelle Bernhardt	Maren Hofmann-Larsen	Kelly Prondzinski
Brad Beutler	Alexa Hollywood	Marie Quast
The Blancos	William and Lois Hoover	Dean B. Radtke
Erin Borgwordt	Kathleen E. Horkheimer	Denise Radzins
Robert J. Borth	Lisa Kaldin	Bob Raffel and Christi Jost
Lisa and Daniel Bostrack	Rachel and Andrew Kaplan	Sahitya Raja
Kent and Jennifer Brase	Patti Kaufmann and Hans Haupt	Adolfo Rebollo and Josone De Le Torre
Bri Bromberek and Tyler Goelzer	Joseph and Marlys Kohls	M. Reedy and C. Williams
Andrea and Evan Burlew	James Konek	Jon Reetz
Karen Carver	Christina Kruger-Gruendyke	Peter Roesselet
Brian and Victoria Cole	Carolyn Laes	Sheridan Ryan
Karen Crane	Sean and Vanessa Laughlin	Marianne Sambar
Mike Dalcher	Sally Lautmann	Mark and Karen Saxon
Patrick Dawson	Jeff LaVoncher	Jeremy and Debra Scarlett
Myra Delapaz	Robert Lee	Kristin Schae
Dan and Maryann Desaulniers	Laure Lepplae-Arthur	Autumn Schlinder
Buddy and Ann Doll	Susan Lovern	Tammy Schmidtke
Nelida Dutilly	Radhika Maheshwari	Julie Schumacher
Lin and Dwight Ellis	James Maldonado	Ann and Tom Schuster
Bernd and Heike Engwicht	Bonnie Marcus	Joe and Rita Schwalbach
Hope Erwin and Rich Frank	Jennifer and Adam Marcus	Michal and Lynn Sedivy
Hope Erwin and Rich Frank	Mike Martens	Michael Shapiro
Gwyn and Terri Evans	Dena McPhetres	Casey Starker
Geoff and Kelley Farnsworth	Sara Meadows	Marvin Strawn
Andy and Laura Fish	David Mickelson	Rob Sullivan
Paul Fleisch	Maureen Mies	Tom and Kari Swietlik
Tom and Pamm Foran	Teresa Mika	Janet Thomas
Terry Fowler and Valerie Wright	Tracy Miller	John C. Thomore, Jr.
Michelle Fradkin	Tammy and Mark Monfre	Elise and Ben Uphoff
Diane Funk	Shannon and Jean-Marc Monteiro	Dianna Van Mullen
Jeanine Gaynor	Jennifer Munoz	Judy Weiss
Mark and Carrie Gerke	Anne Neary	Margaret Wenger
Rosa M. Gomez	Reuben and Lauren Neese	Carmen and Justin Wesser
Sarah Goralewski and Thomas Weinmann	Bryan and Heather Nill	Erika White
Marion Gottschalk	Frank, Mary, and Jean Oliver	Don Wilkinson
Gerard Graham	Judith Ormond	Jack Wilson
Sue Grosse		Matt and Andrea Zehnder
Marcia Hall		

## Thank You

**Sarah Jacobson**  
Animal Puppets  
Children's Microscopes

**Jill Wesloski**  
15 Coffee Mugs

**Bill and Ann Hill**  
Artwork by John James  
Audubon & Mildred Elliott

**Dick and Cindy Palmersheim**  
Garmin – Nuvi 1490T GPS

## Memorials

**Frederick (SANC's Bald Eagle)**  
Janice Mahlberg and  
Michael DiOrio

**Kessie (SANC's American  
Kestrel)**  
Faith Miller

**David V. Uihlein, Sr.**  
Stephen and Rosemary Gnas

## Honorariums

**Polly Van Dyke**  
Nina Dentici

## Raptor Sponsorships

**Barley - Barn Owl**  
Kelly and Thomas Glatch  
*In honor of Sean Glatch's  
12th Birthday*

## Wish List

- Industrial Wood Chipper
- 4 x 4 Tractor
- Canoe Trailer

# CALENDAR

## January & February 2011

### Hatha Yoga for Health and Wellness

Reduce stress, increase your flexibility, and enrich your sense of well-being. The first trial class is free!

**DATES:** Every Monday & Saturday  
**TIME:** 9:15am -10:30am or 5:45pm-7:00pm  
 Monday  
 10:00am-11:15am Saturday  
**\*\*\*FEE:** For program fees, please call (414)352-2880 ext. 0  
**LEVEL:** Families

### Sky Hunters: Word with a Bird\*\*

Get a beak-to-beak view of one of SANC's feathered ambassadors. A raptor handler will be showcasing one of our many birds of prey. Our falcons, hawks, owls, a vulture, and an eagle will appear on a rotating basis. Stop by each weekend to check them out. Please note there will be no program on Jan. 2.

**DATES:** Every Saturday & Sunday  
**TIME:** 1:00pm-2:00 pm  
**FEE:** Free with Center Admission  
**LEVEL:** Families



### Boomers and Beyond

The "Boomers and Beyond" program will be offered the first Thursday of every month. We will start with socializing, coffee and treats, and then we'll head out on the trails, if favorable conditions exist, to engage in nature's instructive process. January's class will explore the newly blazed land management access trails in our Research Area. You'll discover firsthand what animal life frequents this seldom used and beautiful area of the Center. February's class will get an inside look at the design and construction of our award-winning building from the project architect for Kubala Washatko Architects, Joel Krueger. The February program is handicapped accessible.

**DATES:** Thursday, January 6  
 Thursday, February 3  
**TIME:** 9:00am -10:30am (January)  
 9:00am-11:00am (February)  
**\*\*\*FEE:** M: Adult \$10 (Jan), \$15 (Feb)  
 NM: Adult \$12 (Jan), \$17 (Feb)  
**LEVEL:** Adults

### Fireside Conversations\*\*

This monthly series brings the opportunity to learn the collective wisdom we can generate around thought-provoking, environmentally-related readings. Our discussions will be led by Don Quintenz. We will base our discussions on Thoreau's Walden, with January's reading from "Where I Lived..." through "Solitude" and February from "Visitors" through "Baker Farm". For newcomers, missing the discussions of earlier chapters will not prevent you from participating in the current discussions. Light refreshments will be provided.



**DATES:** Monday, January 10  
 Monday, February 14  
**TIME:** 1:30pm-3:00pm  
**\*\*\*FEE:** M: Adult \$10, NM: Adult \$12  
**LEVEL:** Adult

### Lake Michigan Full Moon Snowshoe

Venture out on snowshoes with Don Quintenz in a season whose beauty is known only to a few. We will visit one of the most beautiful scenes of all seasons – the ever-changing ice formations of our Great Lake Michigan. In the magical light of a full moon, view the bright stars of the winter sky and try your luck at calling in owls and getting close to deer and other wildlife. We will finish with hot drinks in front of our fireplace. Snowshoes provided. If there's no snow, we'll hike on foot!

**DATE:** Tuesday, January 18  
**TIME:** 6:30pm-8:30pm  
**\*\*\*FEE:** M: Adult \$12, NM: Adult \$14  
**LEVEL:** Adult

### January Full Moon Family Hike

Where is the moon when the moon is round? It's rising when the sun is going down! Here at SANC, the full moon seems to rise right out of the Lake Michigan! Join Jessy Knox and let's watch the moonrise over the lake. Who knows what else we might see as we hike around after hours! Dress for the weather (cooler by the lake). Families with children of all ages are welcome but children must be accompanied by an adult.

**DATE:** Wednesday, January 19  
**TIME:** 4:00pm-6:00pm  
**\*\*\*FEE:** M: Child \$6, Adult \$10  
 NM: Child \$8, Adult \$12  
**LEVEL:** Families

### What's Up Duck? \*\*

Join us for an evening program on the artistic, cultural and historical overview of waterfowl decoys in America. Jeff Jara, adjunct professor of Art History, will lecture using SANC's Harney Stover collection of bird decoys.

**DATE:** Thursday, January 20  
 (Rain Date: Thursday, January 27)  
**TIME:** 7:30pm-9:00pm  
**\*\*\*FEE:** M: Adult \$8, NM: Adult \$10  
**LEVEL:** Adult



### Nature Adventurers: White Winter

Come explore the white winter wonderland. What animal left those tracks in the snow? How do animals stay warm in the winter? Who is hibernating? Who migrated? What can we create with snow and ice? We will hike, explore, learn and play during our time together.

Nature Adventurers meets once a week for 5 weeks. Please have your child eat a snack prior to class and as always, dress for the weather!

**DATE:** Wednesdays, January 26- February 23  
**TIME:** 4:00pm-5:30pm  
**\*\*\*FEE:** M: Child \$75, NM: Child \$85 (for entire series)  
**LEVEL:** K5-1st grade

### Nature Explorers: Winter Wonders

Join us as we explore SANC's many habitats in the winter! We might walk on Mystery Lake, follow wild animal tracks, check out Lake Michigan's ice formations, build snow structures, or try out snowshoes and kick-sleds. Along the way, we will discover things about winter animal adaptations, snow and ice. We are waiting to explore a winter wonderland with you!

Nature Explorers meets once a week for 5 weeks. Please have your child eat a snack prior to class and as always, dress for the weather!

**DATE:** Wednesdays, January 26- February 23  
**TIME:** 4:00pm-5:30pm  
**\*\*\*FEE:** M: Child \$75, NM: Child \$85 (for entire series)  
**LEVEL:** 2nd-4th grade

## Discovery Nature Hiking

Have you often wished you could do your daily walk in a beautiful, natural setting and learn about the amazing things that you're passing by? We will walk along the meadows, woods, wetlands, and lake shore of the Center while Don Quintenz interprets the scenery and helps answer the questions that nature evokes in us. The entire program is taught on the trail. Physically you need to be able to walk any of the loop trails at the Center taking short, but frequent stops.



**DATES:** Wednesday, January 26  
Thursday, February 17  
**TIME:** 1:30pm-3:00pm  
**\*\*\*FEE:** M: Adult \$5, NM: Adult \$7  
**LEVEL:** Adult

## SANC's First Ever Family Camp-In

At long last, we are proud to offer a chance to "camp out" inside the building! Bring your blankets, sleeping bags, inflatable pads and even stake-less tents. Tom Finley will offer a fun indoor program and then lead you on an adventurous night hike. There will also be a warm fire in the Hearth Room complete with s'mores. Enjoy a light breakfast in the morning. Space is very limited, so call soon for a list of available rooms.

**DATES:** Friday, January 28 –  
Saturday, January 29  
**TIME:** 7:00pm Friday – 9:00am Saturday  
**\*\*\*FEE:** M: \$75/family, NM: \$85/family  
**LEVEL:** Families

## Hangin' with Hyatt: Extreme Geocaching

Hi folks! Has it been a while since you found a cache box in the woods? Tag along with Jim, as he provides the lowdown on geocaching and GPS units. Don't worry - the Center has them for you to borrow. We'll venture outside until you're comfortable with your unit, then we'll let you explore on your own. Using the unit, you'll have to find a cache box with your puzzle piece inside. When you find it, you'll be given the coordinates for the next cache box with another piece of the puzzle. Find all seven puzzle pieces and put it together before anybody else, and you win!

**DATE:** Saturday, January 29  
**TIME:** 9:00am-11:00am  
**\*\*\*FEE:** M: Child \$6, Adult \$10  
NM: Child \$8, Adult \$12  
**LEVEL:** Families

## Winter Survival

Brrrr...it's cold outside! We turn up the heat and put on warm clothes, but what do the plants and animals do? Hibernate, migrate, activate or die! Join Jessy Knox and let's explore the strategies used by mammals, birds, reptiles, amphibians, plants and insects to survive in a frozen landscape.

**DATE:** Saturday, January 29  
**TIME:** 1:00pm-3:00pm  
**\*\*\*FEE:** M: Child \$6, Adult \$10  
NM: Child \$8, Adult \$12  
**LEVEL:** Elementary-aged children & parents

## Johnson Controls Visit\*\*

Johnson Control has been awarded LEED Platinum certification by the U.S. Green Building Council, for its efforts to make the Glendale corporate campus a model of energy efficiency and sustainability. Learn from their staff the techniques of photovoltaic and thermal solar energy, geothermal wells, rainwater management, green roofs, material re-use and integrated building management. Meet at SANC; transportation provided.

**DATES:** Tuesday, February 1 or  
Thursday, March 24  
**TIME:** 9:00am-11:00am  
**\*\*\*FEE:** M: Adult \$19, NM: Adult \$22  
**LEVEL:** Adult

## New Moon Family Night Hike

Where is the moon when the moon is new? It's a sliver on the right, getting bigger every night! A new moon means it will be a dark night with less moonlight in the night sky. Join Jessy Knox as we hike around after hours! Dress for the weather (cooler by the lake). Families with children of all ages are welcome but children must be accompanied by an adult.

**DATE:** Wednesday, February 2  
**TIME:** 6:00pm-8:00pm  
**\*\*\*FEE:** M: Child \$6, Adult \$10  
NM: Child \$8, Adult \$12  
**LEVEL:** Families

## Raptor Saturday!\*\*\*

In this family program, handlers allow a close-up view of falcons, hawks, owls, and a Turkey Vulture. Sharp talons, curved hooked beaks, binocular vision, and incredible hearing make these raptors specialized birds of prey.

**DATES:** Saturday, February 5  
**TIME:** 1:00 – 2:00pm  
**FEE:** Free with Center Admission  
**LEVEL:** Families



## Winter River Snowshoe

Neighborhood parkways are often home for numerous animals that go undetected by the untrained eye. Guided by Don Quintenz, we will search out the animals and the signs they leave on their journey to find their needs. Many parkways are often quite scenic, especially with their winter cover of blue river ice and white snow. The ecology of a winter community will be our focus. Snowshoes are provided; no experience is necessary. We will meet at Hart Park in Wauwatosa (directions will be sent to you upon registration). If there is no snow, we will hike on foot.

**DATE:** Saturday, February 5  
**TIME:** 1:00pm-3:00pm  
**\*\*\*FEE:** M: Adult \$18, NM: Adult \$21  
**LEVEL:** Adult

## Hangin' with Hyatt: The Great Antler Search

Looking for a reason to get out of the house? Come down to the Audubon Center and help Jim look for deer antlers. We'll start inside with an overview of the Center's long-standing deer trapping program. Then we'll head outside to look for these marvelous creatures. Jim may even put a lucky youngster in a deer trap! It's the shedding season, so we'll try to find those elusive antlers. If you find an antler, YOU GET TO KEEP IT! Jim guarantees that we'll find antlers. Refreshments will be served, so dress warm and enjoy the great outdoors.



**DATE:** Saturday, February 12  
**TIME:** 9:00-11:00 am  
**\*\*\*FEE:** M: Child \$6, Adult \$10  
NM: Child \$8, Adult \$12  
**LEVEL:** Families

## The Ancient City of Aztalan Artifacts

Join Robert Birmingham, retired state archaeologist, on a tour of the Milwaukee Public Museums' Aztalan artifacts. After our "behind the scenes" visit, spend the rest of the time visiting the different exhibits the museum has to offer. This program is a follow-up to our visit to the Aztalan State Park. Unless you are a Milwaukee Public Museum member each participant will have to pay an additional \$12.50 (\$11 for seniors) admission. We are limited to 9 participants, so sign up early!

**DATE:** Friday, February 18  
**TIME:** 9:30am-2:30pm  
**\*\*\*FEE:** M: Adult \$33, NM: Adult \$38  
Self-Drive: M: \$20, NM: \$23  
**LEVEL:** Adult

## Are You Sleeping?

Have you noticed that tinge of warmth in the air? Okay, just pretend. The days of late winter are growing steadily longer. That means slumbering wildlife is stirring beneath our feet. Spring is on the minds of animals such as toads, bats and the 'King of February' the groundhog. Join Tom Finley for a morning dedicated to these sleepy critters. We'll meet some of our resident amphibians and then head outside to seek the signs of spring!

**DATE:** Saturday, February 19  
**TIME:** 10:00am-11:30am  
**\*\*\*FEE:** M: Child \$4, Adult \$7  
NM: Child \$6, Adult \$29  
**LEVEL:** Families

## Starry Nights of Winter

Do you enjoy seeking out stars, planets and constellations? Then join us for an evening of stargazing, as we search the heavens from the trails and the top of our 60 foot tower. Winter is a wonderful time to see favorite constellations such as Orion the Hunter, the Big Dipper and Taurus the Bull. This is a great program for those who need a little help getting oriented to the night sky. Be sure to dress for the weather! Bring a flashlight and binoculars, if you have them.

**DATE:** Monday, February 28  
**TIME:** 6:30pm -8:00 pm  
**\*\*\*FEE:** M: Child \$4, Adult \$7  
NM: Child \$6, Adult \$9  
**LEVEL:** Families

## Mindful Parenting Class\*\*

Apply the practices of mindfulness to parenting using discussion and practice. Become more in touch with the potential of each moment and decrease stress while bringing greater wisdom, joy and balance to parenting. Mindful parenting is a way of connecting with our children through a deeper awareness of ourselves. Lead by Heidi Lukinac, a registered yoga teacher and an avid mindfulness student. Each session includes six classes. Choose one session.

**DATES:** Tuesdays, Jan. 11 to Feb. 15 or  
Fridays, Jan. 14 to Feb. 18  
**TIME:** Session I – Tuesdays, Jan. 11, 18, 25  
and Feb. 1, 8, 15 at 1:00-2:15pm  
Session II – Fridays, Jan. 14, 21, 28  
and Feb. 4, 11, 18 at 9:10-10:25am  
**\*\*\*FEE:** M: \$65 for series  
NM: \$75 for series  
**LEVEL:** Adult



## Hand-in-Hand

Explore nature with your little one! We will hike, play, do art activities and listen to a story. Dress for the weather – because, best of all, we will go outside rain or shine. Several time slots for the same class are offered. Please choose one for each topic.



## Who's Been Here?

Winter is a wonderful time to discover what animals have ventured our way. They may have left tracks, a pile of seeds or a hole in a tree.

**DATES:** Thursday, Feb. 10 or Thursday, Feb. 17  
**TIME:** Session I – Feb. 10 at 9:00am-10:15am  
Session II – Feb. 10 at 10:30am-11:45am  
Session III – Feb. 17 at 9:00am-10:15am  
**\*\*\*FEE:** M: \$12 for adult/child pair  
NM: \$15 for adult/child pair  
**LEVEL:** 2-4 year olds (Each child must be accompanied by an adult.)

## It's Maple Sugar Time!

It's Maple Syrup Time and it's the trees that give us this delicious gift. Celebrate these trees with us in this age-appropriate program.

**DATE:** Thursday, Feb. 24 or Thursday, Mar. 3  
**TIME:** Session I – Feb. 24 at 9:00am-10:15am  
Session II – Feb. 24 at 10:30am - 11:45am  
Session III – Mar. 3 at 9:00am-10:15am  
**\*\*\*FEE:** M: \$12 for adult/child pair  
NM: \$15 for adult/child pair  
**LEVEL:** 2-4 year olds (Each child must be accompanied by an adult.)

## The Spiritual World of Nature\*\*

*This series seeks to help us all connect more intimately with nature by getting in touch with the powerful spiritual side of the natural world. Pre-registration is encouraged and all programs are geared for adults. Light snacks and refreshments will be provided for all classes.*

**FEE: M: \$10, NM: \$12 (for each program)**

### PHILIP CHARD LECTURE & BOOK SIGNING

In his new book, *Nature's Way*, psychotherapist Philip Chard, a leader in the emerging field of eco-psychology, examines how nature's interaction helps us overcome debilitating feelings, heal emotional wounds, nurture creativity, and grow spiritually. Hear Philip Chard's compelling stories that illustrate the vital role of the natural world in nurturing personal well-being and spiritual vitality. And buy his new book!

**DATE:** Tuesday, January 11  
**TIME:** 7:00pm-8:30pm

### RON PRESTON: AMERICAN INDIAN EXPRESSION

Ron Preston is a member of the San Carlos Apache and was honored by being selected as Head Man Dancer for the Gathering of Nations. Ron serves the Indian Community in a number of ways and integrates song, dance, other artwork and nature care in his everyday life. Join us to experience Ron's award-winning dance, drum and song followed by a Q/A session. Enjoy the heartbeat of Mother Earth!

**DATE:** Tuesday, January 18  
**TIME:** 1:30pm– 3:00pm

### MARCIA KAMINSKI'S MEMOIR DISCUSSION

Share in our discussion about author Marcia Kaminski's memoir *God Never Hurries*. Walk with her and a Shepherd/Husky named Bear into the natural world where she took problems surrounding her aging parents' care needs and where she found courage, comfort and nature's timeless wisdom. Join the discussion whether or not you have read the book, which is available at [www.godneverhurries.com](http://www.godneverhurries.com) or at the Audubon Center's gift shop.

**DATE:** Tuesday, February 8  
**TIME:** 7:00pm–8:30pm

### MOSHE KATZ: CONNECTING NATURE WITH THE SPIRITUAL WORLD

Spiritual educator Moshe Katz will speak on "How can we intersect the world of science/nature and the spiritual world?" While this is a topic for years of study and discussion, we will introduce biblical texts that offer a glimpse into this subject. Bring an open mind and any copy of the book of Genesis with you.

**DATE:** Thursday, February 10  
**TIME:** 1:30pm– 3:00pm



SCHLITZ  
Audubon  
NATURE  
CENTER

1111 E. Brown Deer Road  
Milwaukee, WI 53217

Non-Profit Organization  
U.S. Postage  
**PAID**  
Milwaukee, WI  
Permit No. 4168

**RETURN SERVICE REQUESTED**

DO NOT DELAY DELIVERY  
Dated Material Enclosed

## **Celtic Harp Concert with Kim Robertson FUNDRAISER FOR SANC**

**Sunday, February 20  
2:30pm - 4:00pm**

Kim Robertson's name has become synonymous with the gentle, but powerfully evocative Celtic harp. Enjoy an afternoon recital of Irish, Scottish, American and original compositions, performed by this prominent performer, composer and recording artist.

**\$12 Adults - Pre-registered  
\$15 Adults - Day of Concert  
\$10 Students & Children (6-17)**

## **SANC's First Ever Winter Carnival**

**Sunday, January 16  
12:00pm - 4:00pm  
\$5/car**

Join Audubon educators for an afternoon of winter fun. There will be snowshoeing for people age 12 & up (we have snowshoes available for use) and animal tracking hikes for younger folks. Don Quintenz will lead interpretive tours on cross-country skis, but don't forget to bring your own! There will be exciting sessions on raptors, snow crystals and how mammals keep warm. Take a guided hike to the lakefront to see beautiful ice formations. If conditions are right, you can ice skate on Mystery Lake, but don't forget to bring your own skates. Enjoy the warmth of a fire with hot chocolate in the Hearth Room. With both indoor and outdoor events, this event will go on regardless of the weather, so dress for whatever nature throws our way and celebrate winter with us!



## **Mission Statement**

Schlitz Audubon Nature Center connects people with nature and inspires them to become responsible stewards of the natural world.